

F-325X

Electrical Specifications (@25C)

1. Maximum Power: 18.9 VA
2. Primary:
 - Series: 230V 50/60 Hz
 - Parallel: 115V 50/60 Hz
3. Secondary: 12.6VCT @ 1.5 Amps
4. Voltage Regulation: 15 % TYP @ full load to no load
5. Temperature Rise: 35C TYP (45C MAX allowed)

Description:

The F-325X is part of a series which has a long history of reliable service in the field, made from a proven design and constructed with UL recognized materials.

Construction:

Wound on a single channel nylon bobbin. Materials are UL recognized, Class B (130° C) rated.

Safety:

These products are 100% hipot tested with an insulation of 1500V between primary and secondary windings as well as between the primary / secondary windings and the core.

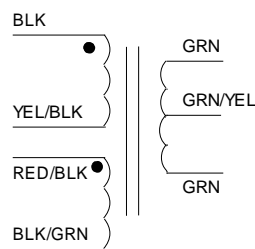
Dimensions: Units: In inches

A	B	C	D
1.937	3.312	2.00	2.812

Mounting Hole Diameter: 0.187 in

Weight: 1.30 lbs

Schematic:



Connections:

Transformer is provided with 7" (178mm) long, 0.25" (6mm) stripped and tinned, stranded 22 AWG, UL1015 lead wire.

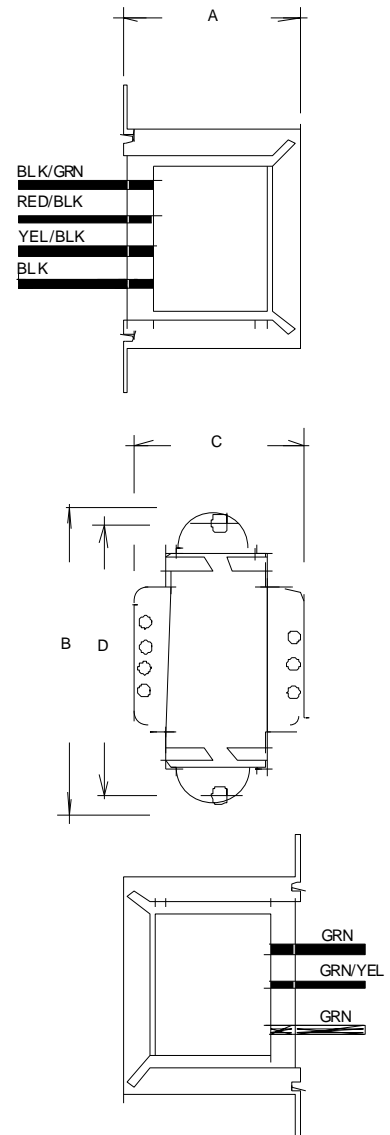
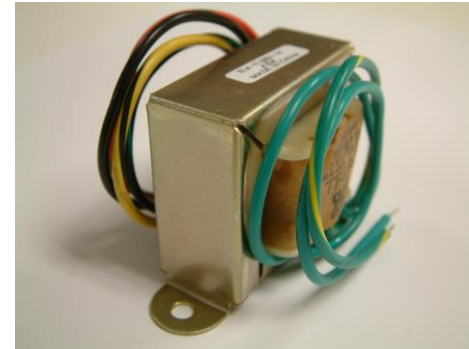
Primary:

Series: BLK to BLK/GRN, Jumper YEL/BLK to RED/BLK

Parallel: BLK to YEL/BLK, Jumper BLK to RED/BLK and YEL/BLK to BLK/GRN

Secondary: Green to Green

RoHS Compliance: As of manufacturing date February 2016, all standard products meet the requirements of 2015/863/EU, known as the RoHS 3 initiative.



POWER TRANSFORMER
Chassis Mount: Single Secondary

* Upon printing, this document is considered "uncontrolled". Please contact Triad Magnetics' website for the most current version.

Web: www.TriadMagnetics.com
Phone 951-277-0757
Fax 951-277-2757

460 Harley Knox Blvd.
Perris, California 92571

Publish Date: April 27, 2023